



Dethmers Manufacturing Company

DOING OUR BEST TO PROVIDE YOU THE BEST

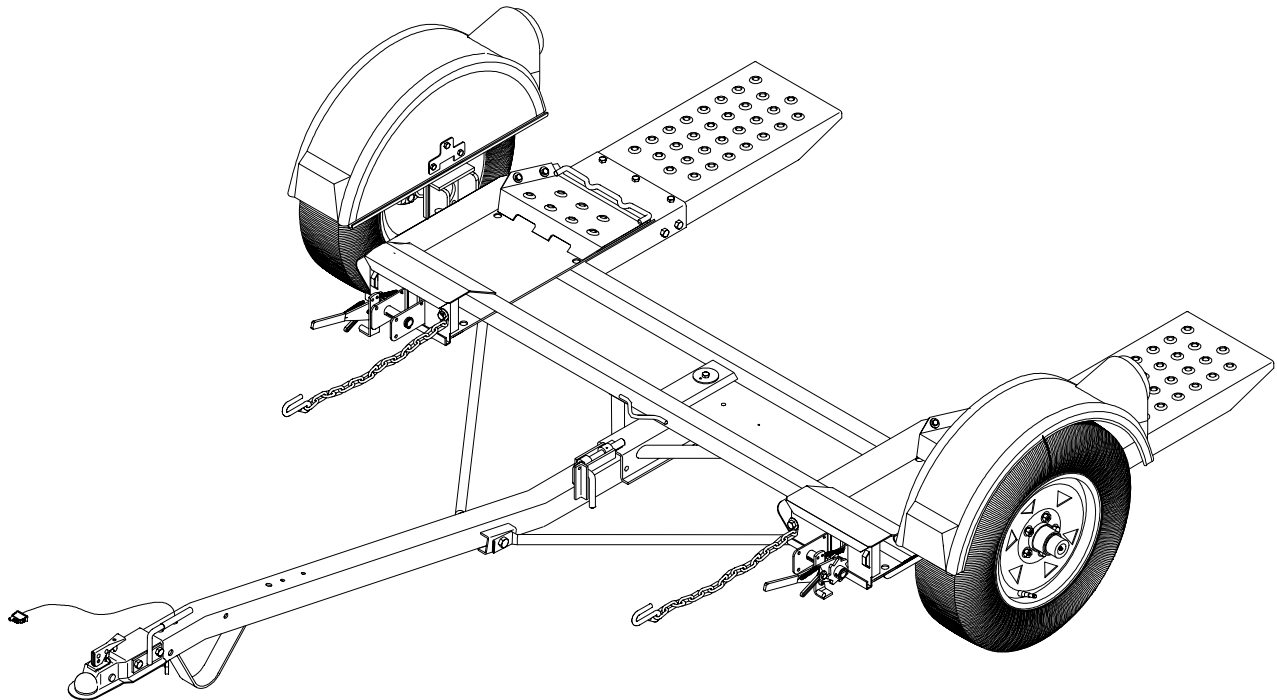
TOW-IT

TI110 & TI110SB TOW DOLLY

OPERATORS MANUAL

ASSEMBLY
CALIBRATION
OPERATION
REPLACEMENT PARTS

READ complete manual CAREFULLY
BEFORE attempting operation.



DEMCO • Dethmers Mfg. Co. • 4010 320th St. • P.O. Box 189 • Boyden, IA 51234
PH: (712) 725-2311 or (712) 725-2302 • Toll Free: 1-800-543-3626 • FAX: 1-800-845-6420
www.demco-products.com

IMPORTANT

We have discovered 1992 and newer model cars that are too wide in the body area to properly fit on a T1110 - 8' wide tow dolly even though the front tire measurement is less than 70".

The 1992 and newer Oldsmobile 88 and 98 are in this category, there may be others. In addition to the standard measurement, always follow weight limitations when using a Demco TOW-IT Tow Dolly.

T1100 - Standard Unit

3350 lbs. - Total Towed Vehicle Weight

T1110SB - Brake Unit

3500 lbs. - Total Towed Vehicle Weight



WARNING: Exceeding weight limitations or not using a towing vehicle larger and at least 1,000 lbs. heavier than the tow dolly and the towed vehicle combined can result in loss of towing vehicle control, separation of the tow dolly from the towing vehicle, or separation of the towed vehicle from the tow dolly, causing severe personal injury, death, or property damage.

CAUTION: All vehicles to be towed on Demco Tow Dollies must be towed with the front axle on the dolly.

Table of Contents

General information	2
Safety , Signal Words	3
Equipment Safety Guidelines	4
Lighting and Marking	4
Safety Sign Locations	5
Safety Sign Care	6
Tire Safety	6
Remember	6
Before Operation	7
During Operation	7-8
Following Operation	8
Highway and Transport Operations	8
Performing Maintenance	9
Bolt Torque	10
Additional Safety Information	11
Testing Lights	12
Loading Instructions	12-14
Damage Prevention	14
Rear Wheel Drive Precautions	14
Limited Warranty	15
Tow Dolly Parts List and Breakdown	16-17
Assembly Instructions	18-19
Surge Brake Assembly	20
10" Brake Cluster Parts List and Breakdown	20-21
Actuator Parts List and Breakdown	21
Optional Kits	22-23

"Reporting Safety Defects"

If you believe that your vehicle has a defect which could cause a crash or could cause injury or death, you should immediately inform the National Highway Traffic Safety Administration (NHTSA) in addition to notifying Dethmers Manufacturing Company (DEMCO).

If NHTSA receives similar complaints, it may open an investigation, and if it finds that a safety defect exists in a group of vehicles, it may order a recall and remedy campaign. However, NHTSA cannot become involved in individual problems between you, your dealer, or Dethmers Manufacturing

Company (DEMCO).

To contact NHTSA, you may either call the Auto Safety Hotline toll-free at 1-800-424-9393 (or 366-0129 in Washington, D.C. area) or write to:

NHTSA,
U.S. Department of Transportation
Washington, D.C. 20590.

You can also obtain other information about motor vehicle safety from the Hotline.

SAFETY

TAKE NOTE! THIS SAFETY ALERT SYMBOL FOUND THROUGHOUT THIS MANUAL IS USED TO CALL YOUR ATTENTION TO INSTRUCTIONS INVOLVING YOUR PERSONAL SAFETY AND THE SAFETY OF OTHERS. FAILURE TO FOLLOW THESE INSTRUCTIONS CAN RESULT IN INJURY OR DEATH.



**THIS SYMBOL MEANS
ATTENTION
BECOME ALERT
YOUR SAFETY IS INVOLVED!**

SIGNAL WORDS

Note the use of the following signal words **DANGER**, **WARNING**, and **CAUTION** with the safety messages. The appropriate signal word for each has been selected using the following guidelines:

DANGER:

Indicates an imminently hazardous situation that, if not avoided, will result in death or serious injury. This signal word is to be limited to the most extreme situations typically for Tow It components which, for functional purposes, cannot be guarded.

WARNING:

Indicates a potentially hazardous situation that, if not avoided, could result in death or serious injury, and includes hazards that are exposed when guards are removed. It may also be used to alert against unsafe practices.

CAUTION:

Indicates a potentially hazardous situation that, if not avoided, may result in minor or moderate injury. It may also be used to alert against unsafe practices.

If you have questions not answered in this manual, or require additional copies, please contact your dealer or Dethmers Mfg. Co., P.O. Box 189, 4010 320th Street, Boyden, IA 51234
ph: (712) 725-2311 or (712) 725-2302 Toll Free: 1-800-543-3626 Fax: (712) 725-2380



SAFETY...YOU CAN LIVE WITH IT



EQUIPMENT SAFETY GUIDELINES

Every year many accidents occur which could have been avoided by a few seconds of thought and a more careful approach to handling equipment. You, the operator, can avoid many accidents by observing the following precautions in this section. To avoid personal injury, study the following precautions and insist those working with you, or you yourself, follow them.

Replace any caution, warning, danger or instruction safety decal that is not readable or is missing. Location of such decals is indicated in this booklet.

Do not attempt to operate this Tow It under the influence of alcohol or drugs.

Review the safety instructions with all users.

Operator should be a responsible adult. **DO NOT ALLOW PERSONS TO OPERATE OR ASSEMBLE THIS UNIT UNTIL THEY HAVE DEVELOPED A THOROUGH UNDERSTANDING OF THE SAFETY PRECAUTIONS AND HOW IT WORKS.**

Do not paint over, remove, or deface any safety signs or warning decals on your Tow It . Observe all safety signs and practice the instructions on them.

Never exceed the limits of a Tow It. If its ability to do a job safely is in question **DON'T TRY IT.**



LIGHTING AND MARKING

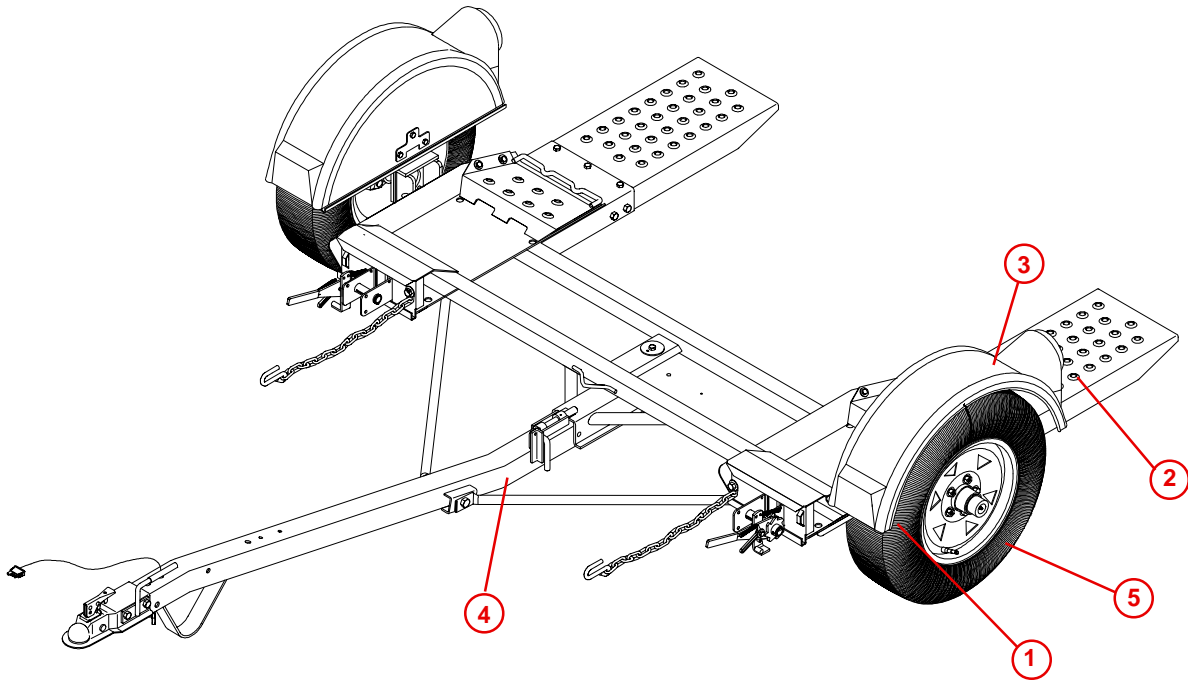
It is the responsibility of owner to know lighting and marking requirements of local highway authorities and to install and maintain equipment to provide compliance with regulations.

Light bar kits are available from your dealer or from manufacturer.



SAFETY SIGN LOCATIONS

Types of safety sign and locations on Tow It are shown in illustration below. Good safety requires that you familiarize yourself with various safety signs, type of warning, and particular function related to that area, that requires your SAFETY AWARENESS.



SAFETY DECAL PARTS LIST

REF. NO.	PART NO.	DESCRIPTION
1.	04508	Amber Reflector
2.	04804	Red Reflector
3.	RD21007	Instructions
4.	DD21016	Winch Operation
5.	DA21001	Tire Pressure



SAFETY SIGN CARE

- Keep safety signs clean and legible at all times.
- Replace safety signs that are missing or have become illegible.
- Replacement parts that displayed a safety sign should also display current sign.
- Safety signs are available from your distributor, dealer parts department, or factory.

How to install safety signs:

- Be sure installation surface is clean and dry.
- Decide on exact position before you remove backing paper.
- Remove smallest portion of split backing paper.
- Align decal over specified area and carefully press small portion with exposed sticky backing in place.
- Slowly peel back remaining paper and carefully smooth remaining portion of decal into place.
- Small air pockets can be pierced with a pin and smoothed out using piece of decal backing paper.



TIRE SAFETY

- Failure to follow proper procedures when mounting a tire on a rim can produce an explosion which may result in serious injury or death.
- Do not attempt to mount a tire unless you have proper equipment and experience to do the job.
- Inflating or servicing tires can be dangerous. Whenever possible, trained personnel should be called to service and/or mount tires.
- Tow It tires must be inflated to recommended P.S.I. . See decal on Tow It for correct pressure.
- Always order and install tires and wheels with appropriate type and load capacity to meet or exceed gross weight of unit.



REMEMBER

Your best assurance against accidents is a careful and responsible operator. If there is any portion of this manual or function you do not understand, contact your local authorized dealer or manufacturer.



BEFORE OPERATION:

- Carefully study and understand this manual.
- Keep wheel and lug nuts tightened to specified torque.
- Assure tires are inflated evenly.
- Give unit a visual inspection for any loose bolts, worn parts, or cracked welds, and make necessary repairs. Follow maintenance safety instructions included in this manual.
- Be sure there are no tools lying on or in Tow It.
- Do not use unit until you are sure that area is clear, especially around children and animals.
- Don't hurry learning process or take unit for granted. Ease into it and become familiar with your new Tow It.
- Practice operation of your Tow It and its attachments. Completely familiarize yourself and other operators with its operation before using.
- Make sure that brakes are evenly adjusted (if equipped with brakes)
- Securely attach to towing vehicle. Use an appropriately sized and rated hitch ball and attach safety chains.
- Do not allow anyone to stand between tongue or hitch and towing vehicle when backing up to unit.
- Make sure tow rating on vehicle is high enough for what it is towing.



DURING OPERATION

- **SAFETY CHAIN** - Always follow state and local regulations regarding safety chains and auxiliary lighting when towing. Be sure to check with local law enforcement agencies for your own particular regulations. Only safety chains (not elastic or nylon/plastic tow straps) should be used to retain connection between towing vehicle and towed unit in event of separation.
- Do not load towed vehicle with cargo. Towed vehicles exceeding weight limits will overload Tow It and may cause serious injury and damage.
- Criss cross safety chains under tongue, secure to mounting loops on towing vehicle.
- Secure emergency brake actuator cable to mounting loop on towing vehicle.
- Beware of bystanders, **PARTICULARLY CHILDREN!** Always look around to make sure it is safe to start engine of towing vehicle or move unit. This is particularly important with higher noise levels, as you may not hear people shouting.
- **NO PASSENGERS ALLOWED**- Do not carry passengers anywhere on or in towed unit.
- When halting operation, even periodically, set towing vehicle parking brake, shut off engine, and **remove ignition key**.
- Be extra careful on inclines.

- **MANEUVER TOWING VEHICLE AT SAFE SPEEDS. DO NOT EXCEED 45 M.P.H.**
- Avoid overhead wires or other obstacles. Contact with overhead lines could cause serious injury or death.
- Avoid loose gravel, rocks, and holes; they can be dangerous for unit operation or movement.
- Allow for unit length when making turns.
- Do not work under raised components or attachments unless securely positioned and blocked.
- Keep all bystanders and pets clear of work area.
- Operate towing vehicle from operators seat only.
- As a precaution, recheck hardware on Tow It every 50 miles, and correct all problems. Follow maintenance safety procedures.



FOLLOWING OPERATION

- Following operation, or when unhitching, stop towing vehicle, set parking brake, shut off engine and **remove ignition key**.
- Store Tow It in area away from human activity.
- Do not permit children to play on or around stored Tow It.
- Make sure parked Tow It is on hard, level surface.
- Wheel chocks may be needed to prevent unit from rolling.



HIGHWAY AND TRANSPORT OPERATIONS

- Adopt safe driving practices:
 - Always drive at safe speed relative to local conditions and ensure that your speed is low enough for an emergency stop. **Do not exceed 45 M.P.H.**
 - Reduce speed prior to turns to avoid risk of overturning.
 - Always keep towing vehicle in gear to provide engine braking when going downhill. **Do not coast.**
 - **Do not drink and drive!**
- Comply with state and local laws governing highway safety.
- Local laws should be checked for all highway lighting and marking requirements.

- Plan your route to avoid heavy traffic.
- Be a safe and courteous driver. Always yield to oncoming traffic in all situations, including narrow bridges, intersections, etc.
- Watch for obstructions overhead and to both sides while transporting.
- Operate with maximum visibility at all times. Make allowances for increased length and weight of Tow It when making turns and stopping.



PERFORMING MAINTENANCE

- Good maintenance is your responsibility. Poor maintenance is an invitation to trouble.
- Make sure there is plenty of ventilation. Never operate engine of towing vehicle in a closed building. Exhaust fumes may cause asphyxiation.
- Before working on Tow It, stop towing vehicle, set parking brake, turn off engine and **remove ignition key**.
- Always block wheels and never use a jack as sole support.
- Always use proper tools or equipment for job at hand.
- Use extreme caution when making adjustments.
- Follow torque chart in this manual when tightening bolts and nuts.
- Openings in skin and minor cuts are susceptible to infection from brake fluid.
Without immediate medical treatment, serious infection and reactions can occur.
- After servicing, be sure all tools, parts and service equipment are removed.
- Do not allow grease or oil to build up on any step or platform.
- When replacing bolts, refer to owners manual for proper size and grade.
- Refer to bolt torque chart for head identification marking.
- Where replacement parts are necessary for periodic maintenance and servicing, genuine factory replacement parts must be used to restore your Tow It to original specifications. Manufacturer will not claim responsibility for use of unapproved parts and/or accessories or other damages as a result of their use.
- If Tow It has been altered in any way from original design, manufacturer does not accept any liability for injury or warranty.
- A fire extinguisher and first aid kit should be kept readily accessible while performing maintenance on this Tow It.

BOLT TORQUE

TORQUE DATA FOR STANDARD NUTS, BOLTS, AND CAP SCREWS.

Tighten all bolts to torques specified in chart unless otherwise noted. Check tightness of bolts periodically, using bolt chart as guide. Replace hardware with same grade bolt.

NOTE: Unless otherwise specified, high-strength Grade 5 hex bolts are used throughout assembly of equipment.

Bolt Torque for Standard bolts *

Torque Specifications

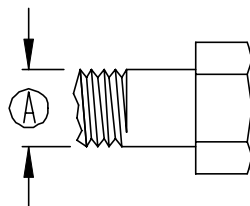
"A"	GRADE 2		GRADE 5		GRADE 8	
	lb-ft	(N.m)	lb-ft	(N.m)	lb-ft	(N.m)
1/4"	6	(8)	9	(12)	12	(16)
5/16"	10	(13)	18	(25)	25	(35)
3/8"	20	(27)	30	(40)	45	(60)
7/16"	30	(40)	50	(70)	80	(110)
1/2"	45	(60)	75	(100)	115	(155)
9/16"	70	(95)	115	(155)	165	(220)
5/8"	95	(130)	150	(200)	225	(300)
3/4"	165	(225)	290	(390)	400	(540)
7/8"	170	(230)	420	(570)	650	(880)
1"	225	(300)	630	(850)	970	(1310)

Bolt Torque for Metric bolts *

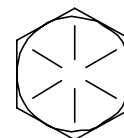
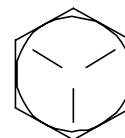
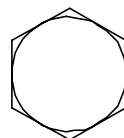
"A"	CLASS 8.8		CLASS 9.8		CLASS 10.9	
	lb-ft	(N.m)	lb-ft	(N.m)	lb-ft	(N.m)
6	9	(13)	10	(14)	13	(17)
7	15	(21)	18	(24)	21	(29)
8	23	(31)	25	(34)	31	(42)
10	45	(61)	50	(68)	61	(83)
12	78	(106)	88	(118)	106	(144)
14	125	(169)	140	(189)	170	(230)
16	194	(263)	216	(293)	263	(357)
18	268	(363)	--	--	364	(493)
20	378	(513)	--	--	515	(689)
22	516	(699)	--	--	702	(952)
24	654	(886)	--	--	890	(1206)

Torque figures indicated are valid for non-greased or non-oiled threads and heads unless otherwise specified. Therefore, do not grease or oil bolts or cap screws unless otherwise specified in this manual. When using locking elements, increase torque values by 5%.

* GRADE or CLASS value for bolts and capscrews are identified by their head markings.



GRADE-2 GRADE-5 GRADE-8



CLASS 8.8

CLASS 9.8

CLASS 10.9





WARNING: FAILURE TO FOLLOW THESE INSTRUCTIONS CAN RESULT IN LOSS OF TOWING VEHICLE CONTROL, SEPARATION OF THE TOW DOLLY FROM THE TOWING VEHICLE, SEPERATION OF THE TOWED VEHICLE FROM THE TOW DOLLY, CAUSING SEVERE PERSONAL INJURY, DEATH, OR PROPERTY DAMAGE.

SAFETY

Safety is of utmost importance at all times. There are several items that must be checked each time before using and while using the Tow-It.

Make sure all bolts are properly tightened and those requiring a set torque are up to specifications:

Lug Nuts - 75 to 80 ft./lbs.

Check Lug Nut tension after the first 5 miles and periodically thereafter.

The ball hitch must latch securely around the ball and the safety lock pin or lever must be in position to lock the hitch on the ball.

RECOMMENDED BALL HEIGHT: 18 inches to the top of the ball on the towing vehicle.

Hook the towed vehicle safety chains to the frame of the vehicle directly above the area where the chain is mounted on the Tow-It. Leave some slack in the chain to allow suspension movement.

Check to make sure that all lights are in proper working order.

Examine the winches and straps, making sure they are in good conditon.

Be certain the safety lock pins are locking the strap winches.

Retighten straps over the tires after the first 5 miles and every 50 miles thereafter. Ensure that they are tight.

The TI110 tires must be inflated to the recommended 35 PSI.

The TI110SB tires must be inflated to the recommended 50 PSI.

The strap on the optional tongue winch must be in good condition and should be stored neatly on winch when not in use.

NOTE: The winch strap must not be left connected to the towed vehicle after it is loaded and strapped down.

Make sure the optional light bar is fastened securely at the rear of the towed vehicle.

The wires to the optional light bar should be run along the car and fastened so as not to damage the finish of the towed vehicle.

NOTE: This unit cannot be backed up when loaded.

All vehicles mounted on the Tow-It must be mounted with the front of the vehicle facing forward.

Rear Wheel Drive: Disconnect the towed vehicle driveshaft for rear wheel drive vehicles with automatic transmission.

For manual transmission: Consult your vehicle owners manual for towing suitability with the drive shaft connected.

MAINTENANCE

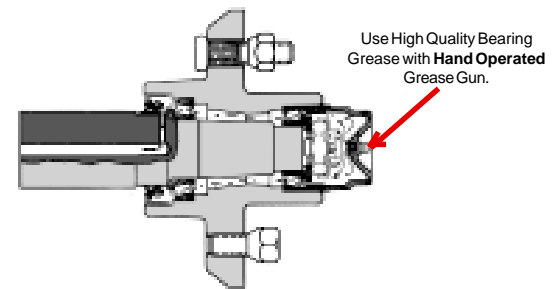
Periodically check all bolts and nuts to ensure proper tension or torque.

An occasional drop of oil may be required on the moving parts of the tie down winches.

Grease the center pivot pin grease zerk every **1500 miles.**

Grease the main frame platform skids every **1500 miles.** These grease zerks are readily accessible from under the front tire stop main platform.

Grease the Sure Lube™ Hubs every **3,000 miles.**



IMPORTANT LOADING INSTRUCTION

Check your wheel tie-down straps.

Your Tow-It is equipped with custom made wheel tie-down straps of a standard size that will fit most tires, however if your tires are too large or too small you will want to exchange these new straps for the proper size straps.

1. **Tire too large** - This is very obvious. The strap will not basket over the tire properly; call us, we will provide at NO Charge on an exchange basis, the proper size strap. You must return your new unused straps and provide us with the Make and Model of your car and the tire size.
2. **Tire too small** - This is not as obvious. The basket will fit down over the tire very well; the problems cannot be readily seen. You must tighten the straps down solid and then check on the inside of the tire and be sure the strap, when tightened, does not come in contact with any metal that may cause wear or cutting such as strut mounts. If there is contact, you need a smaller strap, call us, we will provide on a NO Charge, exchange basis, the proper size strap. You must return your new unused straps and provide us with the Make and Model of your car and tire size.

TESTING LIGHTS BEFORE USE

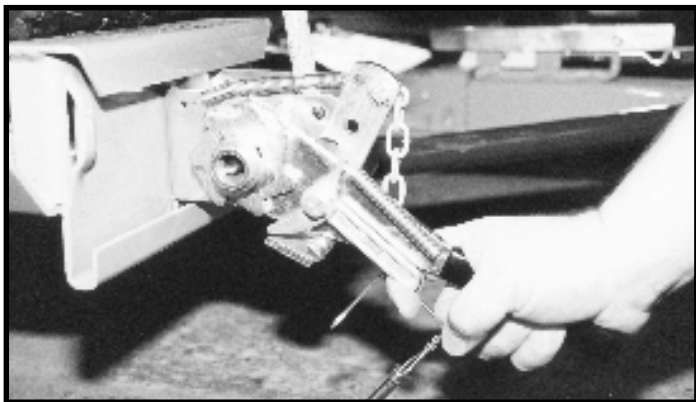
1. Check that the **WHITE** (ground) wire of the wiring harness is connected to the Tow-It frame and the **WHITE** (ground) wire is connected to the frame of the towing vehicle.
2. With headlights in "ON" position, the tail lights, the light cluster bar, the license plate light, and the clearance lights should be lighted.
3. Start engine and have someone depress brake pedal. Brake lights of tow dolly and towing vehicle should come "on" and "off" simultaneously with each application.
4. Turn left turn signal on. Left turn light of Tow-It and towing vehicle should flash simultaneously. Should the turn signal lights of the trailer function opposite to those of the towing vehicle, it is probable that the **YELLOW** and **GREEN** wires have been reversed. Check the plug connection under the tongue of the Tow-It to make sure wire colors are not crossed at that point. If plug connection is incorrect, correct problem by reversing yellow and green wire connection on the towing vehicle.

LOADING INSTRUCTIONS

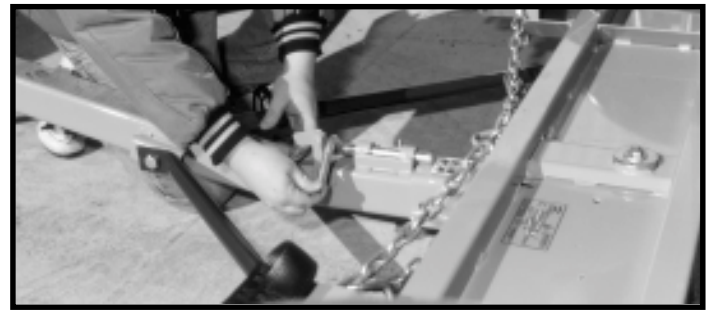
Refer to load limits on inside of front cover.



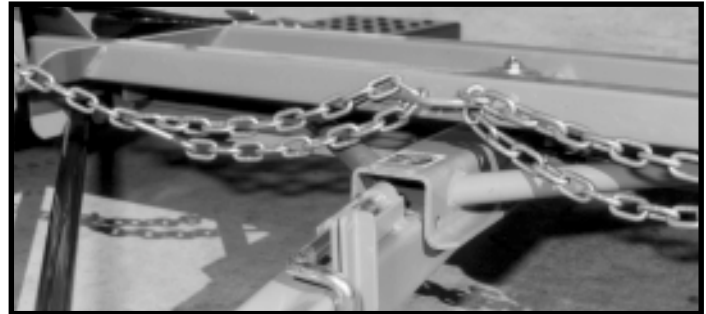
Step 1. Secure ball coupler to 2" (3,500 lb. capacity) towing vehicle ball only. Make sure that the hitch and the hitch ball are in good condition and not rusted, loose or stripped. **Recommended ball height is 18" to the top of the ball.** Make sure hitch is locked down and secured with safety clip. Criss-cross safety chains under tongue and secure to towing vehicle frame.



Step 2. Ensure that towed vehicle parking brake is fully engaged, then release the tie-down straps. **NOTE:** Tie down straps must be "quick-released" by grasping ratchet pawl and ratchet handle simultaneously and pushing down sharply. This process will permit easy removal of strap from winch. Remove tie-down strap hook from its storage position at the rear of the ramp. Lay the straps on the ground in front of the winches.



Step 3. To allow the wheel platform to tilt back for loading:
1) Swing the bottom of the locking latch (C) toward the hitch far enough to allow locking pin handle to be lifted.



2) Pull locking pin toward the hitch as far as it will go. The wheel platform will tilt back to allow loading.



Step 4. Before loading (and unloading) towed vehicle make sure platform and towed vehicle are in straight alignment. Tow dolly must be completely and properly hooked up to the towing vehicle. **Towing vehicle must be larger and at least 1000 lbs. heavier than the tow dolly and towed vehicle combined.**

IMPORTANT: Tire tread width or body width of towed vehicle must not exceed:

TI110	-	70" max. (outside to outside),
TI110SB		42" min. (inside to inside),
		70" max. (body width)



Step 5. With someone safely guiding you, slowly drive vehicle onto platform **FRONT FORWARD**. (Any vehicle mounted on tow dolly must be mounted with front of the vehicle facing forward.) Drive the car forward until the tires touch the ramps. Make sure the tire is aligned to ascend onto the ramps.



Step 6. Drive vehicle onto platform - **Front Forward** - until tires touch the wheel stops at the front of each side of the platform and the platform tilts to a flat position. Make sure the car is centered on the platform. Towed vehicle tires must fit in wheel troughs without overhanging sides. Engage towed vehicle parking brake. Shift loaded car into "park" and lock steering wheel with front tires in a straight position. If the car does not have a locking steering column the steering wheel must be tied securely with front tires in a straight position.

Rear Wheel Drive: Disconnect towed vehicle driveshaft for rear wheel drive vehicles with automatic transmission.

For manual transmission: Consult your vehicle owners manual for towing suitability with the drive shaft connected.

IMPORTANT: Lock the platform in position by pushing locking pin toward platform. Push the handle down as far as possible so locking latch holds it in a locked down position.



Step 7. Place one tie-down strap over each tire and secure hooks to rods located at the rear of each wheel platform. The short side of the hook must face the rear of the **TOW-IT**.



Step 8. Be sure tie-down winch is centered with the tire before tightening straps.



Step 9. While tightening straps, pull cross strap forward to ensure even tightening. Tighten straps until each tire starts to flatten against tire stop. After each strap is tight, insert a safety pin in each winch. Disengage towed vehicle parking brake.

Straps must be retightened after first 5 miles of travel. Check straps every 50 miles thereafter to ensure they are tight and not rubbing or fraying.

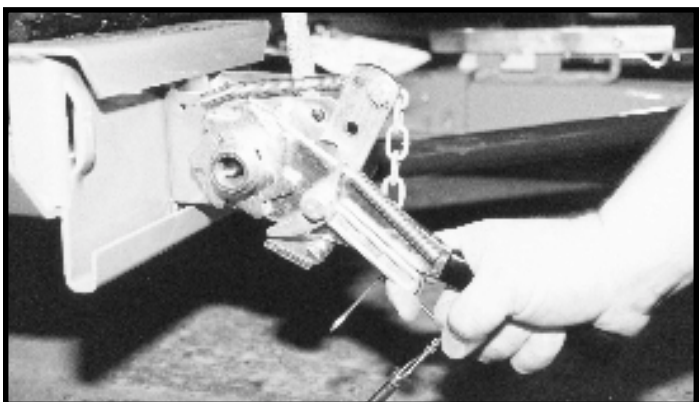
(continue with Step 10 on following page)



Step 10. Make sure the tie-down strap is the correct size for the auto tire. The picture above shows a correct fitting strap. See page 1 of this instruction for proper fit and exchange instructions.



Step 11. Hook the towed vehicle safety chains to frame of vehicle directly above the area where the chains are mounted on the **TOW-IT**. Leave some slack in the chains to allow suspension movement of the towed vehicle. **Review the safety points on page 1 before moving vehicles.**



Step 12. TO UNLOAD towed vehicle. Make sure that platform and vehicle are straight. Reinstall driveshaft. Ensure that towed vehicle parking brake is fully engaged, then unhook the towed vehicle safety chains, and release the tie-down straps. **NOTE:** Tie down straps must be "quick-released" by grasping ratchet pawl and ratchet handle simultaneously and pushing down sharply. This process will permit easy removal of strap from winch. Swing the wheel platform locking latch handle forward, towards the coupler. This will allow the platform to tilt as you slowly drive off. Make sure the winch ratchet handles are horizontal.



Step 13. To pull the TOW-IT empty, make sure tie-down straps are tightened in the storage position, and towed vehicle safety chains are wrapped up and hooked. Tie-down winch handles should be left in a down position (horizontal) with safety pins in place when towing loaded or empty. **DO NOT ATTEMPT TO PULL TOW-IT WITH WHEEL PLATFORM IN LOADING (tilted) POSITION.**

DAMAGE PREVENTION

Check your vehicle manual or registration for vehicle weight. Towing vehicle must be larger and at least 1,000 lbs. heavier than the towed vehicle and tow dolly combined.

Do not pack goods in car that is being towed. Overloading the Tow-It or exceeding the width limit may result in damage to both car and Tow-It.

REAR WHEEL DRIVE PRECAUTIONS

Disconnect towed vehicle driveshaft for rear wheel drive vehicles with automatic transmission. Simply placing transmission in neutral is not sufficient to prevent damage to transmission. For manual transmission, consult your vehicle owners manual for towing suitability with the drive shaft connected.

ALL VEHICLES MOUNTED ON THE TOW-IT MUST BE WITH THE FRONT OF THE VEHICLE FACING FORWARD.



SAFETY

- Examine winches and straps to make sure they are in good condition.
- Check wheel nuts every trip.
- Tires must be inflated to recommended pressure by tire manufacturer.
- Be certain the safety lock pins lock the strap winches.
- Retighten the straps over the tires after the first 5 miles of travel. Check straps every 50 miles thereafter to ensure they are tight and not rubbing or fraying.

DEMCO PRODUCTS - TOW-IT Tow Dolly ORIGINAL PURCHASERS LIMITED WARRANTY

1. Extent and Duration of this Warranty:

Your Demco Tow-It is warranted to be free from defects in materials and workmanship under normal use and service for a period of one year after date of purchase by the original (first) retail owner, or until it is resold or transferred by the original owner. Tires and lights are not included in this warranty.

Tires are warranted by the manufacturer against defects in materials and workmanship, but not against road hazards.

Any part of the Demco Tow-It, except tires and lights, found in the judgement of the manufacturer to be defective in materials or workmanship will be repaired or replaced at the manufacturer's option without charge for parts or labor to the original owner.

2. Manufacturer and Warrantor of Tow Dolly:

Dethmers Manufacturing Co.
4010 320th Street
P.O. Box 189
Boyden, IA 51234
(712) 725-2311

The manufacturer and warrantor of the tires has his name permanently molded into the tires. Tire warranty questions and claims can be taken directly to an authorized dealer of the tire manufacturer.

3. Repair or Replacement Procedure:

If your Demco Tow-It develops a defect (except for tires or lights) during the warranty period, promptly notify Dethmers Manufacturing Co. customer service department. Until such notice is received, Warrantor will not be responsible for any repair or replacement.

Upon receipt of notice from you, Warrantor will have a choice of options in replacing any part it determines to be defective:

- a) Warrantor may require you at your own expense to deliver or ship the part to its factory or authorized dealer. Any defective part will be repaired or replaced and returned to you free of charge. Any part returned to Warrantor and found not to be defective will be returned to you freight collect with an explanation.
- b) Warrantor may elect to ship a new part to its dealer to be exchanged free of charge for the defective part returned by you to the dealer.
- c) Warrantor may elect to ship or deliver a replacement part to your address.

Warranty claims on tires should be presented to a local authorized dealer of the tire manufacturer. Provide proof of purchase when making a tire warranty claim.

4. Limitations on Warranty Coverage:

Coverage under this warranty will be effective only when a copy of the original invoice, showing the date and location of purchase, accompanies any claim for warranty.

Warrantor has no liability whatsoever and this warranty is null and void if any Demco Tow-It has been misassembled or subjected to neglect, negligence, misuse, accident or operated in any way contrary to the operating and maintenance instructions as specified in the Demco Owner's Manual for that model tow dolly.

This warranty does not cover any tow dolly that has been altered or modified so as to affect the tow dolly's operation, performance or durability, or that has been modified to change the intended use of the tow dolly.

In addition, the warranty does not extend to repairs made necessary by normal use of parts, accessories or other equipment which in the judgment of Warrantor, are either incompatible with the Demco Tow-It, or affect its operation, performance or durability.

This warranty does not cover:

- 1) normal wear and tear
- 2) road film or gravel damage to paint
- 3) paint
- 4) rust damage
- 5) Any Demco Tow-It that has been loaded in excess of the load capacity stated on the tow dolly identification label.

Warrantor has a policy of continuous product improvement. We reserve the right to change or improve the design of any Demco Tow-It model, including but not limited to state of the art changes, without assuming any obligation to modify any tow dolly previously manufactured.

Warrantor assumes no responsibility to the owner for loss of use of the tow dolly, loss of time, inconvenience or other damage consequential or otherwise, including, but not limited to expense for gasoline, expense of transporting the tow dolly to the dealer and expense of returning the tow dolly, mechanic's travel time, telephone or telegram charges, road service/towing charges, rental of another tow dolly during the time warranty repairs are being performed, travel, lodging, loss or damage to personal property or loss of revenue or earnings.

5. Limitations of Implied Warranties:

All implied warranties, if any, expire and terminate upon expiration of this warranty. Some states do not allow limitation on how long an implied warranty lasts, so this limitation may not apply to you.

6. Limitation of Consequential Damages:

Warrantor's responsibility under this warranty extends solely to repair or replacement of your Demco Tow-It and its component parts.

Warrantor does not assume responsibility for, nor shall it be liable for, any special, incidental or consequential damages. Some states do not allow the exclusion or limitation on incidental or consequential damages, so the above exclusion or limitation may not apply to you.

7. Use of Vehicle Identification Number (VIN):

The VIN is a 17 digit number located in the lower left corner of the tow dolly identification label. The label is located on the left side of the tow dolly frame. Be sure to include the VIN number in all communications with Warrantor or its dealers concerning the warranty.

8. Purchaser's Rights:

This warranty gives you specific legal rights, and you may also have other rights which vary from state to state.

9. Exclusive Warranty:

This is the only express warranty made by Dethmers Manufacturing Co. on your Demco Tow-It and no agent, employee, or other person is allowed to change or add to this warranty.

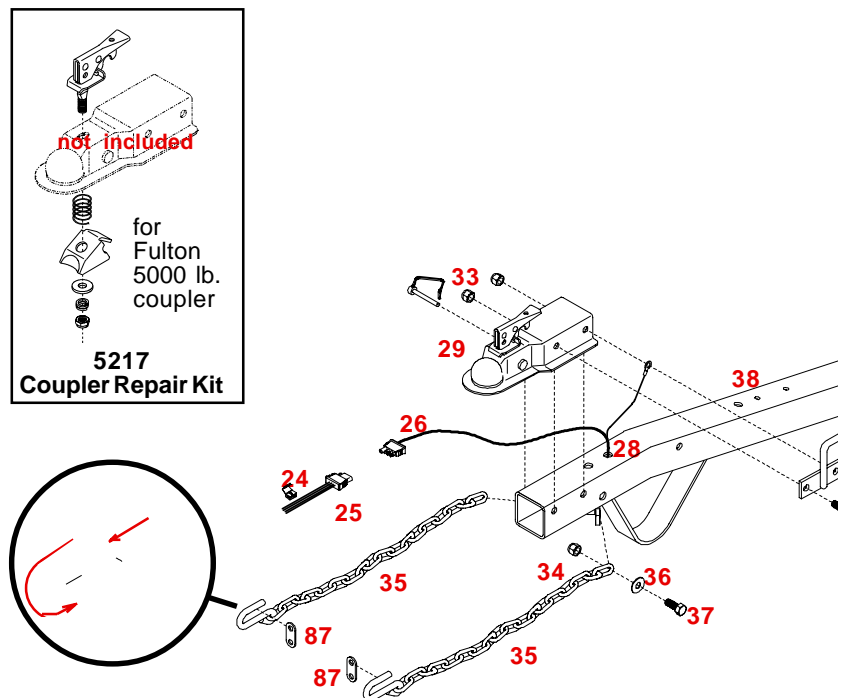
REF. NO.	PART NO.	QTY. REQ'D	DESCRIPTION
1.	5432	1	Left Ratchet Winch Assembly (Plated)
2.	5433	1	Right Ratchet Winch Assembly (Plated)
3.	03569-95	1	Ratchet Frame
4.	03570-95	1	Left Spool Tube
-	03571-95	1	Right Spool Tube
5.	03577	1	Heavy Duty External Snap Ring
6.	03574-95	1	Ratchet Handle
7.	03668	1	18 Ga. Shim Washer
8.	03575-95	1	Left Ratchet Gear
-	03576-95	1	Right Ratchet Gear
9.	03666	1	5/16" x 1-1/4" Roll Pin
10.	02243	1	Black Vinyl Hand Grip
11.	05450	1	Winch Pawl
12.	01864	2	Winch Pawl Spring SS
13.	05449	1	Winch Pawl Bushing SS
14.	00004	1	5/16" Flatwasher
15.	05444	1	3/8"-16 UNC x 3/4" Hex Bolt w/epoxy Gr.5
16.	03572-95	1	Left Ratchet Pawl Arm
-	03573-95	1	Right Ratchet Pawl Arm
17.	03578	1	5/16"-18 UNC x 1/2" Shoulder Screw
18.	01998	1	5/16" Flatwasher SS
19.	02002	1	1/4" Flatwasher SS
20.	02772	2	1/4"-20 UNC Nylon Locknut
21.	01076	1	1/4"-20 UNC x 3/4" Hex Hd. Bolt Gr.5
22.	00214	1	1/4" Flatwasher
23.	05337	1	Lock Pin w/Cable

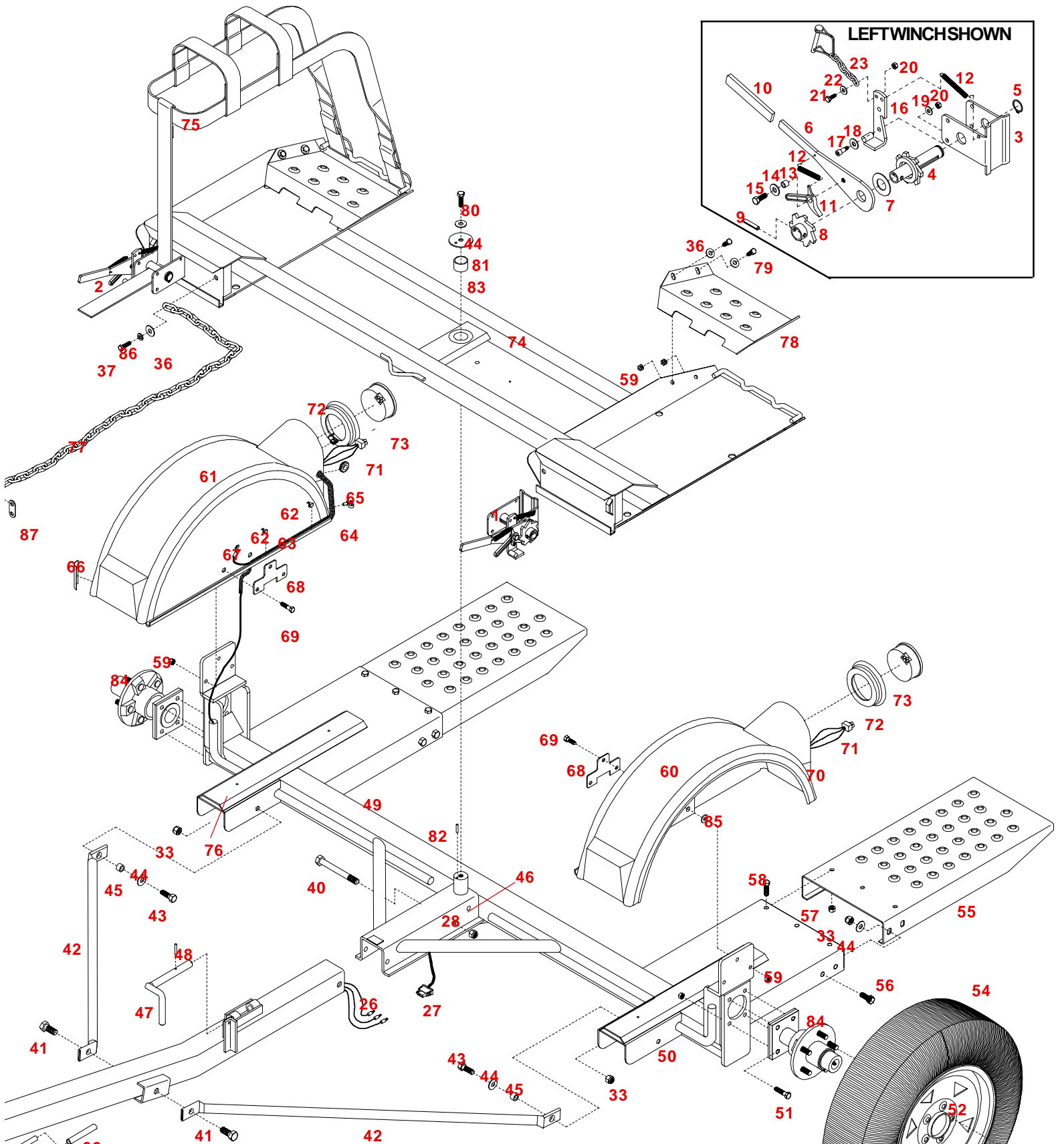
24.	01883	9	Electrical Wire Splicer
25.	01881	1	Trunk Connector
26.	04785	1	Front Half Trailer Wiring Harness
27.	04786	1	Rear Half Trailer Wiring Harness
28.	01863	2	5/8" Grommet
29.	04496	1	Lever Lock Coupler (5,000 lb.)
-	01855	1	Safety Lock Pin for coupler
30.	01338	2	1/2"-13UNC x 4-1/2" Hex Head Bolt (gr.5)
31.	02288-95	1	Handle
32.	02189	1	1/2" I.D. Handle Grip
33.	02178	12	1/2"-13UNC Nylon Insert Locknut
34.	02771	2	7/16"-14UNC Nylon Insert Locknut
35.	01853	2	24" Safety Chain with Hook
-	04194	-	7/16" "S" Hook for safety chains
36.	00059	12	3/8" Flatwasher
37.	01898	4	7/16"-14UNC x 1-1/4" Hex Head Bolt (gr.5)
38.	04792-26	1	Tongue
39.	02587	1	5/8"-11UNC Nylon Insert Locknut
40.	02434	1	5/8"-11UNC x 4-1/2" Hex Head Bolt (gr.5)
41.	03503	2	5/8"-11 UNC x 1-1/4" Hex Hd. Epoxied Bolt
42.	02747-25	2	Bracing Strut
43.	01254	2	1/2-13UNC x 1-1/2" Hex Head Bolt (gr.5)
44.	00085	11	1/2" Flatwasher
45.	02579-95	2	Pivot Bushing
46.	04825	1	3/8" I.D. x 1/2" O.D. Grommet
47.	02574-95	1	Lock Pin (Tongue)
48.	02583	1	3/16" x 1-1/4" Roll Pin
49.	04780-26	1	Undercarriage (09533-26 for TI110SB)
50.	02209	8	7/16"-20UNF Hex Nut (gr.8)
51.	02377	8	7/16"-20UNF x 1-1/2" Epoxied Bolt (gr.8)
52.	04782	2	14 x 6 rim (5 on 4-1/2" BC)
53.	01725	10	1/2"-20UNF Chrome Lug Nut
54.	04826	2	ST205/75R14 "C" Range BW Radial Tire
55.	04323-25	2	Tilt Bed Ramp
56.	00967	8	1/2"-13UNC x 1-1/4" Hex Head Bolt (gr.5)
57.	04168	6	7/16"-20UNF Nylon Insert Locknut
58.	04167	6	7/16"-20UNF x 1" Hex Head Bolt (gr.8)
59.	02592	14	3/8"-16UNC Nylon Insert Locknut
60.	05358	1	Left Fender (w/ wire protector & gr. wire)
61.	05357	1	Right Fender (w/ wire protector & gr. wire)
62.	04425	4	Tinnerman Fender Clamp

REF. NO.	PART NO.	QTY. REQ'D	DESCRIPTION
63.	02298	2	22-1/2" Wire Protector
64.	05443	2	Cable Hanger - wire harness
65.	04944	2	Wire Strain Relief
66.	04508	2	Amber Fender Reflector
67.	02316	2	White Ground Wire
68.	04424-95	2	Back-Up Plate for fender
69.	00914	6	3/8"-16UNC x 1-1/2" Hex Head Bolt (gr.5)
70.	04804	2	Red Fender Reflector
71.	02313	2	3-way Plug Pigtail (tail light)
72.	05447	2	Rubber Mounting Grommet for light
73.	05446	2	Sealed Round Tail Light
74.	04781-26	1	Upper Half Mainframe
75.	03528	2	3-point Tie-Down Strap w/J-Hook & buckle
76.	01674	4	1/4" Drive Type Grease Zerk
77.	02383	2	36" Safety Chain with hook
-	04194	-	7/16" "S" Hook for safety chains
78.	04270-25	2	Rear Tire Stop
79.	00907	8	3/8"-16UNC x 1" Hex Head Bolt (gr.5)
80.	05570	1	1/2"-13UNC x 1" Epoxied Bolt (gr.5) w/zerk
81.	02578-95	1	1/2" Special Flatwasher
82.	02584	1	3/16" x 3/4" Roll Pin
83.	04083	1	1-3/4" O.D. Bronze Bushing
84.	5341-26	2	SureLube™ Hub and Spindle Assembly
85.	04499	6	3/8" External Tooth Washer
86.	00078	2	7/16" Lock Washer
87.	07426	4	Hook Retainer

-	5341	2	Sure Lube™ Hub Assembly
89.	01747	1	Hub
90.	01743	1	Grease Seal (NOK AD 2548 E)
91.	01744	1	Inner Cup (L68111)
92.	01745	1	Inner Cone Bearing (L68149)
93.	01748	1	Outer Cup (L44610)
94.	02264	1	Outer Cone Bearing (L44643)
95.	02265	1	Hardened Tongue Washer
96.	02266	1	13/16"-20 UNF Jam Nut
97.	02267	1	Retainer Adjustment Washer for Jam Nut
98.	00116	1	5/32" x 1-1/2" Cotter Pin
99.	04789	1	Sure Lube Dust Cap
100.	01746	5	1/2"-20UNF x 1-5/8" Ig. Stud Bolt
101.	04790-26	1	Spindle

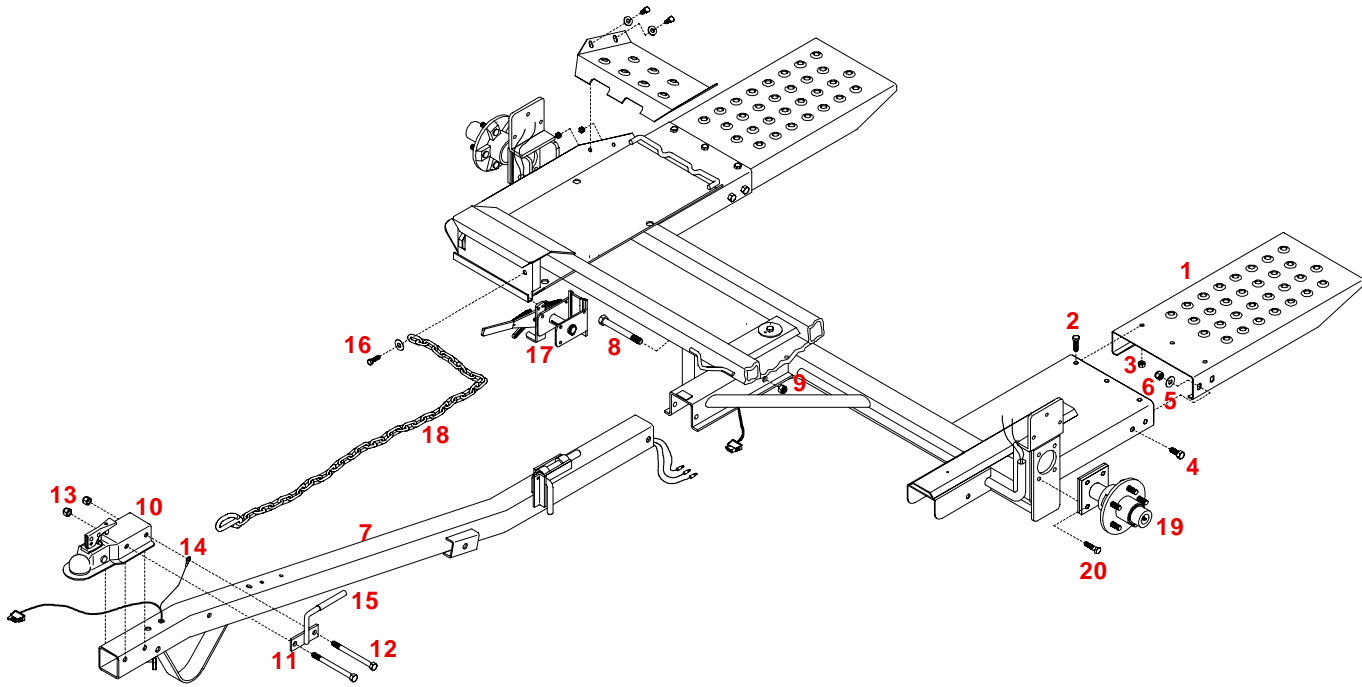
Please order replacement parts by PART NO. and DESCRIPTION.



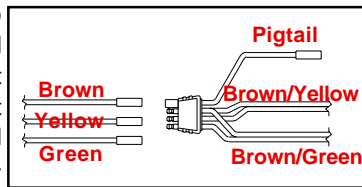


5341 Sure Lube™ Hub Assembly			
101	90	100	
	91		
	92	89	98
		93	97
		95	96
		94	99

TOW-IT ASSEMBLY INSTRUCTIONS



- Place the mainframe on blocks or some other sturdy support so that the frame rests approximately 8"-10" off the ground. Attach the tilt bed ramps (#1) as shown using three 7/16" x 1" grade 8 bolts (#2) and lock nuts (#3) on the top of each ramp and four 1/2" x 1-1/4" grade 5 bolts (#4), flatwasher (#5) and locknuts (#6) (two on each side of the ramp). Torque the 7/16" bolts to 80 ft. lbs. and torque the 1/2" bolts to 75 ft. lbs.
- Hold the tongue (#7) up to the front of the tow dolly and locate the three bullet connectors extending out the back of the tongue and plug into the connector protruding from under the mainframe channel. **Do not cross colors when making this connection.**
- Mount the tongue to the front of the tow dolly using one 5/8" x 4-1/2" grade 5 bolt (#8) and locknut(#9) (torque to 50 ft. lbs.). Do not torque over 50 ft. lbs. or the bed will not tilt. Make sure the tongue latch is in the latched position to the tilt bed.
- Secure the coupler (#10) and lift handle (#11) to the front end of the tongue with two 1/2" x 4-1/2" gr.5 bolts (#12) and locknuts (#13). The white ground wire (#14) is attached under the head of the second bolt attaching the coupler. **(It is very important that a good ground is made).** Torque the locknuts to 75 - 80 ft. lbs. Tap a rubber grip (#15) onto the handle with a rubber hammer or a wooden mallet.
- Remove the 7/16" x 1-1/4" bolt (#16), flatwasher, and locknut from the outer front panel of each wheel platform tire stop. Slide the tie-down winch (#17) into the channel at the front of the wheel platforms as shown. Note that #17 is the left winch. **The ratchet handles are to the outside of each winch and ratchet springs are to the top.** Attach two 36" towed vehicle safety chains (#18). Secure one chain to **each** wheel platform tire stop with the 7/16" x 1-1/4" bolt (#16), flatwasher and locknut.



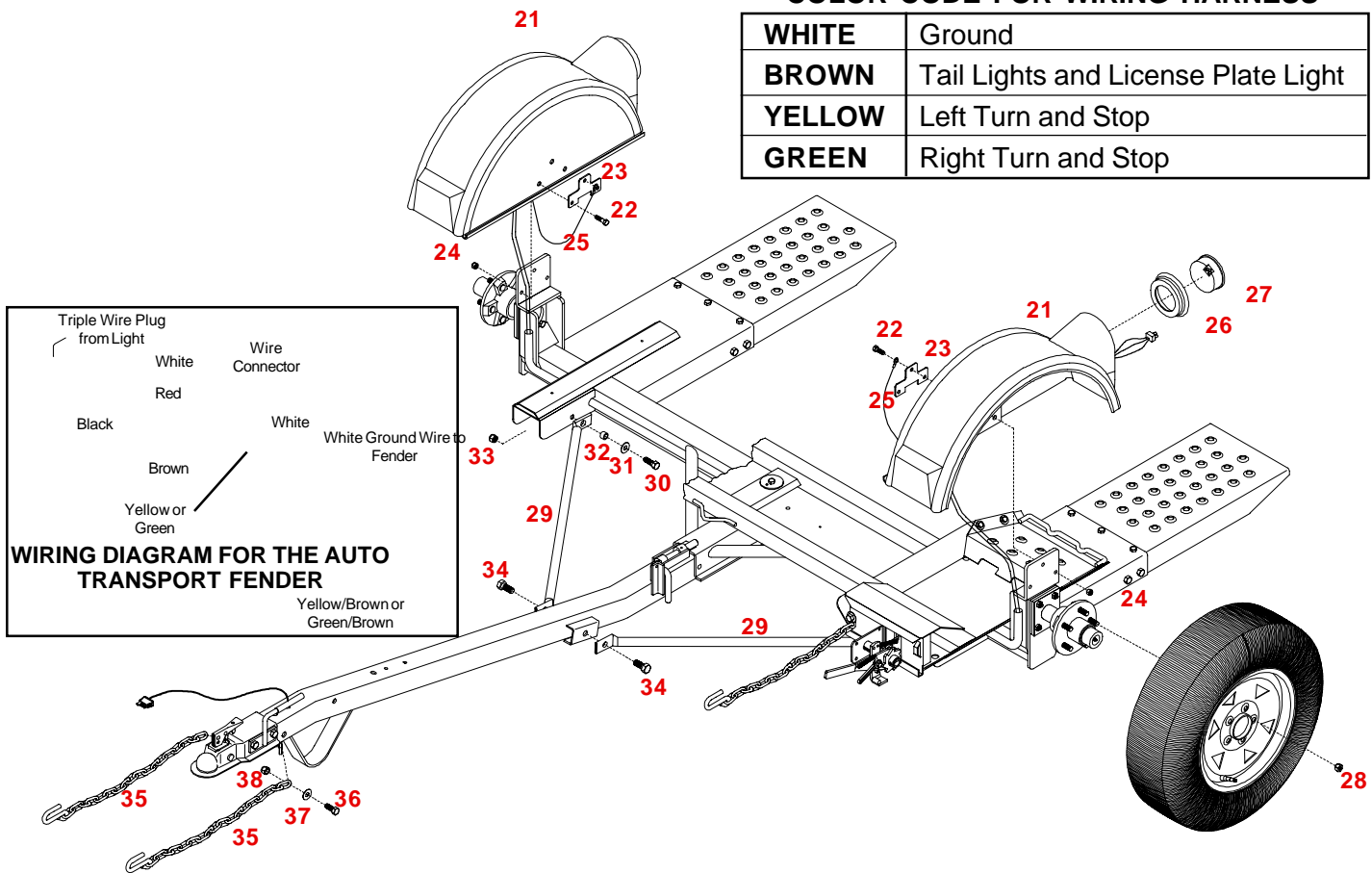
- When assembling the tie-down strap to the tow dolly winch, make sure the tie-down strap does not contain any twists and the overlaps are to the inside. Weave the front of the tie-down strap through the openings in the buckle. The buckle should be approximately 8" from the end of the strap. Thread the strap end through the winch slot. Bring the strap up and thread it back through the buckle again. The buckle should be approximately 1-1/2" - 2" from the winch.
(Refer to drawing on page 9 for following steps)
- Attach Hub and Spindle Assembly (#19) using 7/16" x 1-1/4" Fine Thread Bolts (#20) and hex nuts.
- Bolt the fenders (#21) on using 3/8" x 1-1/2" gr. 5 bolts (#22), back-up plates (#23) and locknuts (#24) in each fender. Mount the fender with the light pocket to the rear. **Attach the white ground wire (#25)** (the end with the eye loop on it) under the center top bolt head.

NOTE: It is advantageous to wire the fender lights prior to attaching the wheels.

- Cut off stripped ends of the wiring harness, cut off stripped end of the white ground wire. The yellow/brown wires must be run to the left tail light pocket. The green/brown wires must be run to the right tail light pocket. Start at either fender, pull the loom at the center of the fender downward and push the green/brown (or yellow/brown) wires upward through the loom until it comes out the loom by the light pocket. Push the white ground wire through the slit in the top of the loom in the fender trough and push the wire toward the light pocket.
- Make sure all three wires are coming out the fender wire loom. Slide the rubber fender grommet over the wires and up close to the wire loom. Push the hollow looped end of the loom hanger into the small hole under the fender pocket in the side of the fender. Leave the holder open. Pull the three wire pigtail wires through the hole in the fender pocket outward. When wiring the pigtail into the tow dolly

COLOR CODE FOR WIRING HARNESS

WHITE	Ground
BROWN	Tail Lights and License Plate Light
YELLOW	Left Turn and Stop
GREEN	Right Turn and Stop



harness at the fender pocket, the wire ends **SHOULD NOT** be stripped. Use the wire connectors to make all contacts. Lay the wire in the connector, pinch securely with a pliers, closing the wire connector. Splice the white wire of the pigtail to the white ground wire from the fender. Splice the black wire to the brown wire. Splice the green (or yellow) wire to the red wire of the pigtail. The connections are made on the outside of the fender pocket and pushed into the fender pocket through the pocket hole. Pull the wires back into the fender pocket and push the strain relief into the fender with the wire loom close to the clip. Wrap the loom hanger tie around the wire loom and insert the peg into the fender.

11. Push the round rubber light seal (#26) into the light pocket. Be sure the lip is secured in the light housing. Plug the pigtail into the fender light. Push the round light (#27) into the rubber seal until it snaps in firmly. Wire the other fender in the same manner.
12. Attach the tire/rim assembly to the mainframe. Use the supplied lug nuts (#28) and torque to 75 - 80 ft. lbs.
13. Lay the bracing struts (#29) out along the tow dolly tongue with the back end (the end with the larger hole in it) of the bracing strut toward the mainframe. Loosely bolt the back of each bracing strut to the trailer frame as shown using 1/2" x 1-1/2" grade 5 bolt (#30), flatwasher (#31), pivot bushing (#32) and locknut (#33). Hold up the front end (the end with the smaller hole) of each bracing strut to the tongue, align holes and secure with a two 5/8" x 1-1/4" epoxied bolt (#34). Torque the 1/2" x 1-1/2" bolt with the pivot bushing to 75 ft. lbs.

14. Attach the two 24" transport safety chains (#35) to the two holes in the angle located under the tongue using two 7/16" x 1-1/4" grade 5 bolts (#36), flatwashers (#37), and locknuts (#38). Torque bolts to 50 ft. lbs.

WIRING OF THE TOWING VEHICLE

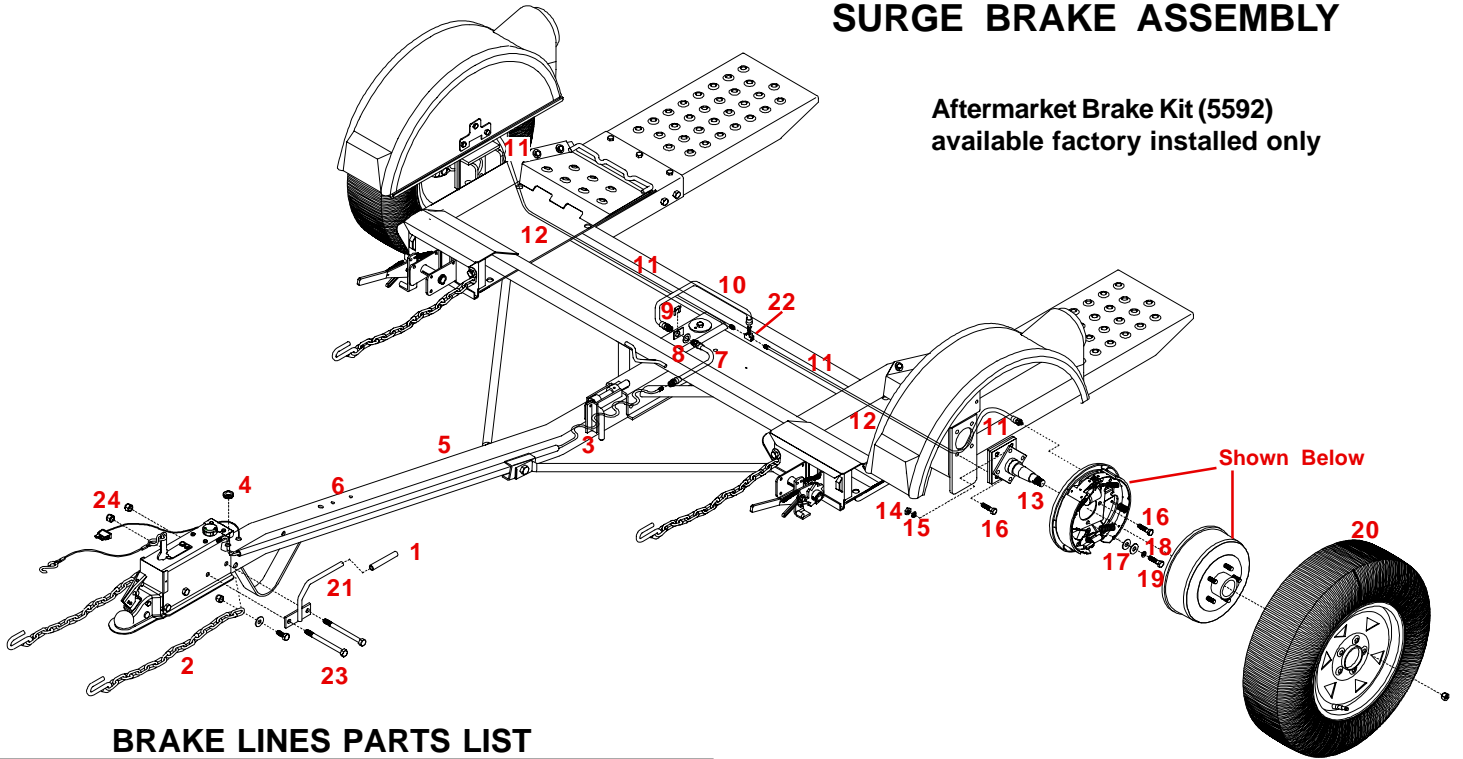
Connect wiring to towing vehicle, keeping in mind the color code indicated below.

1. Make certain towing vehicle lights are **"OFF"**.
2. Connect **YELLOW** wire to left turn signal and stop wire in the left rear of towing vehicle with the wire splicer (01883 X) supplied.
3. Connect **GREEN** wire to the right turn signal and stop wire.
4. Connect **BROWN** wire to tail light wire.
5. **VERY IMPORTANT** - connect **WHITE** wire to frame body of towing vehicle. This is the common ground, and a clean metal - to - metal contact must be made.

CAUTION: Many flashers for vehicle turn signals will not carry the additional load of TOW-IT turn signals. If normal operation does not occur when connected to the TOW-IT, a heavy duty replacement flasher may be obtained through auto parts outlets.

SURGE BRAKE ASSEMBLY

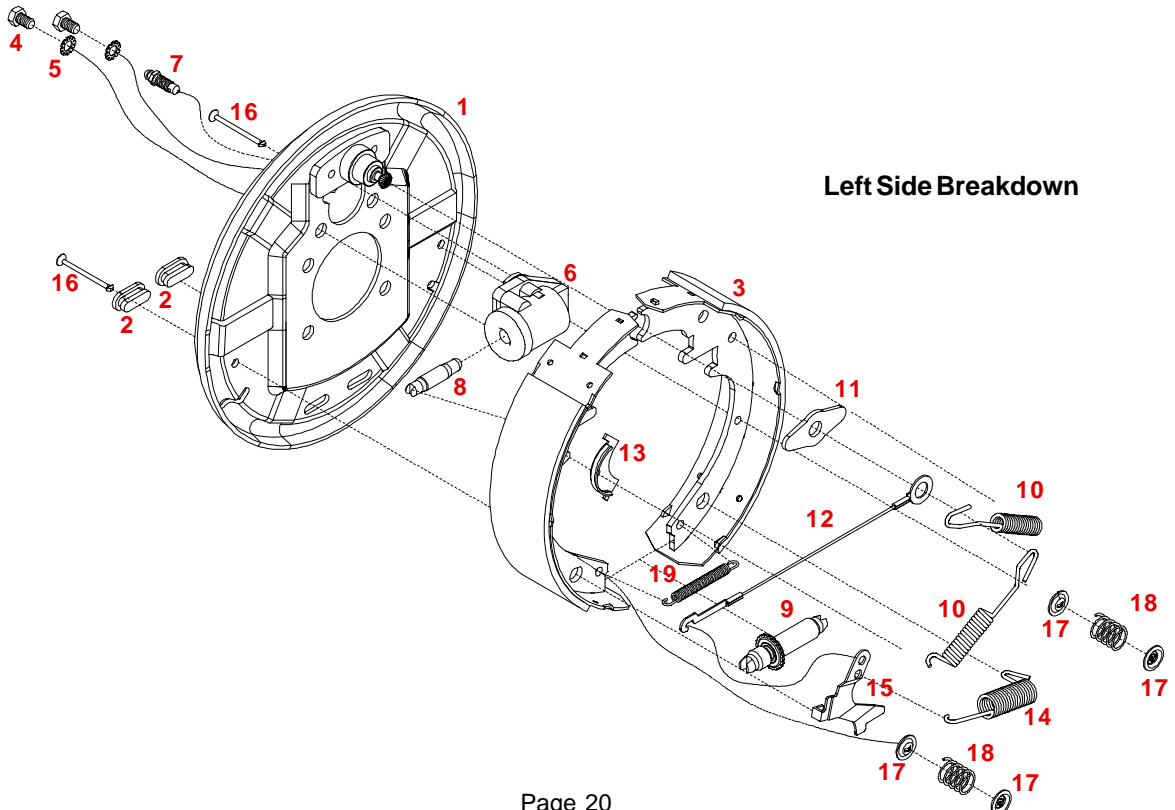
Aftermarket Brake Kit (5592)
available factory installed only



BRAKE LINES PARTS LIST

REF. NO.	PART NO.	QTY. REQ'D.	DESCRIPTION
1.	02189	1	Handle Grip
2.	02383	2	36" Safety Chain
3.	SB580	1	80" Brake Line
4.	01863	1	5/8" Rubber Grommet
5.	02746	1	54" Protective Hose
6.	04792-26	1	Tongue
7.	SB7H66	1	7" Brake Hose
8.	00496	1	5/8" x 14 Ga. Machine Washer
9.	SB7764	1	Retaining Clip
10.	SB512	1	12" Brake Line
11.	02549	4	Rubber Brake Line Protector
12.	SB544	2	44" Brake Line

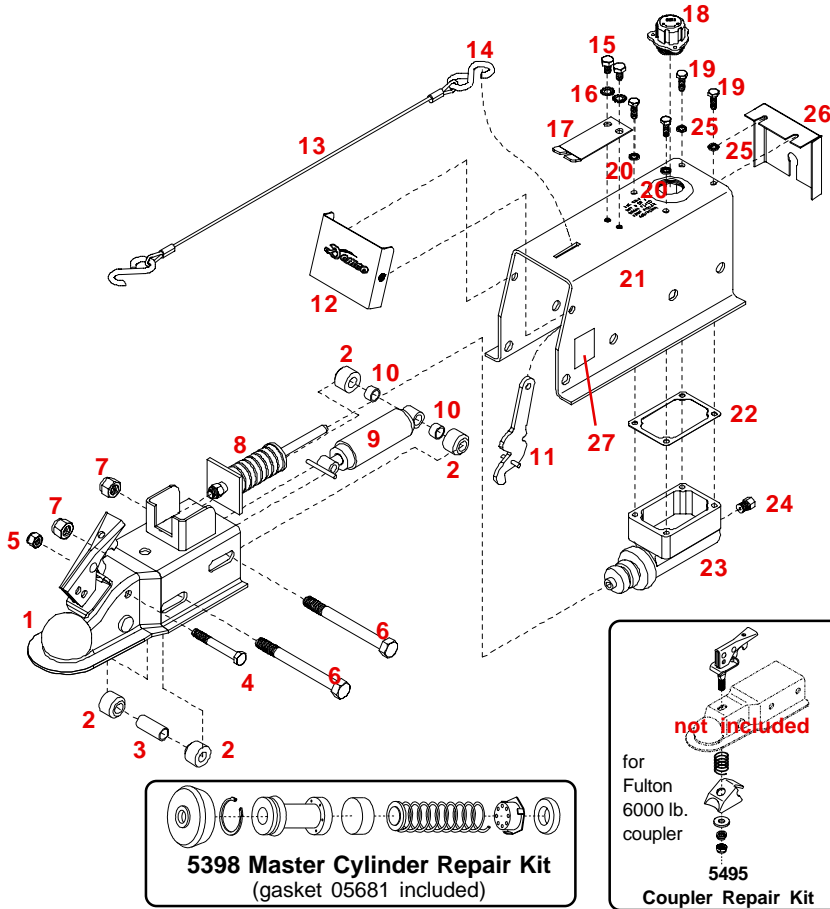
13.	04791-26	2	Spindle w/Brake Flange
14.	02209	6	7/16"-20UNF Hex Nut (Gr.8)
15.	00078	6	7/16" Lockwasher
16.	SB8798	6	7/16"-20UNF x 1-1/8" Knurled Shoulder Bolt
17.	00059	4	3/8" Flatwasher
18.	00060	2	3/8" Lockwasher
19.	00907	2	3/8"-16UNC x 1" Hex Head Bolt (Gr.5)
20.	04826	2	P205/75R14 "C" Range BSW Radial Tire
21.	04017-95	1	Handle
22.	SB7785	1	Tee, Brass
23.	01975	2	1/2" -13 UNC x 5" Hex Head Bolt, Gr. 5
24.	02178	2	1/2" -13 UNC Nylon Insert Locknut



Left Side Breakdown

8606701 ACTUATOR PARTS

ACTUATOR PARTS LIST



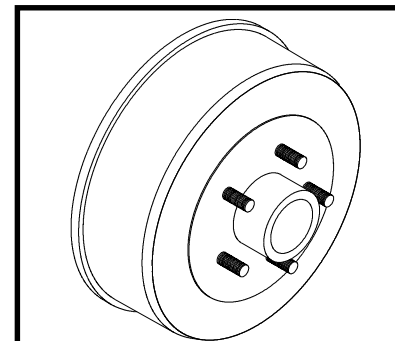
REF. NO.	PART NO.	QTY. REQd.	DESCRIPTION
-	8606701	1	Brake Actuator complete (incl. ref. 1-24)
1.	07599-95	1	6000# 2" Ball Coupler (Fulton)
2.	SB23278	4	Roller
3.	05957-95	1	Front Roller Spacer
4.	02166	1	3/8"-16UNC x 2-3/4" Hex Head Bolt (gr.5)
5.	07176	1	3/8"-16UNC Stover Lock Nut
6.	05684	2	1/2"-13UNC x 4-7/16" Hex Head Bolt (gr.5)
7.	02178	2	1/2"-13UNC Nylon Insert Lock Nut
8.	05959	1	Push Rod Assembly
9.	05692	1	Damper/ Shock
10.	05958-95	2	Rear Roller Spacer
11*	05951	1	Emergency Lever
12.	05955-95	1	Front Cover
13*	SB24700	1	2' Cable with S-Hooks
14.	SB10555	2	Replacement S-Hook ONLY
15.	05960	2	5/16"-18UNC x 1/2" Self-Tapping Screw
16.	05424	2	5/16" External Tooth Lock Washer
17*	05693-95	1	Emergency Lever Spring
18.	03876	1	Master Cylinder Cap
19.	01076	4	1/4-20UNC x 3/4" Hex Head Bolt Gr 5
20.	00057	2	1/4" Lock Washer
21.	03564-95	1	Outer Case
22.	05681	1	Replacement Master Cyl. Gasket ONLY
23.	5650	1	Composite Master Cylinder Kit w/ 09153
24.	SB12098	1	1/8" pipe - 3/16" inverted Flare Fitting
25.	05695	2	1/4" Internal Tooth Lock Washer
26.	05966-95	1	Rear Cover
27.	BH21004	1	Decal, "Preset Fasteners"

-	5400	-	Lever Replacement Kit (incl. items w/*)
-	5398	-	Master Cylinder Repair Kit w/ gasket
-	5495	-	Coupler Repair Kit

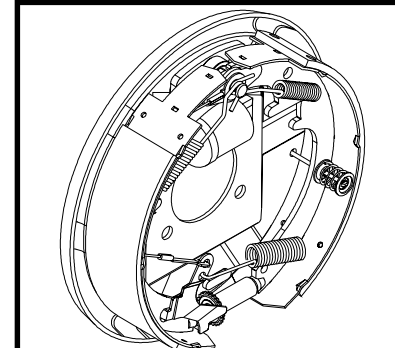
Please order replacement parts by PART NO. and DESCRIPTION.

10" BRAKE CLUSTER PARTS LIST

REF. NO.	PART NO.	QTY. REQd.	DESCRIPTION
-	SB23715	-	Left Hand Cluster (shown above)
-	SB23714	-	Right Hand Cluster
1.	SB24636-30	1	Back Plate Assembly
2.	SB9254	2	Cover Plate - Adjusting Hole
3.	SB10954	1	Brake Shoe Kit (includes 2 Primary & 2 Secondary)
4.	04305	2	5/16"-18UNC-Gr5 x 1/2" Hex Hd Bolt
5.	05424	2	5/16" External Tooth Washer
6.	SB9776	1	Wheel Cylinder Assembly - Right
-	SB9777	1	Wheel Cylinder Assembly - Left
7.	05431	1	Bleeder - replacement
8.	SB9783	1	Push Rod
9.	SB24047	1	Adjusting Screw Assembly - "R" (for LEFT cluster)
-	SB24048	1	Adjusting Screw Assembly - "L" (for RIGHT cluster)
10.	SB10958	2	Spring - Shoe
11.	SB10961-95	1	Shoe Guide
12.	SB23937	1	Cable
13.	SB23936	1	Cable Guide
14.	SB23724	1	Spring Adjusting Screw
15.	05414-95	1	Lever - Left
-	05415-91	1	Lever - Right
16.	SB10959	2	Pin - Shoe Hold Down
17.	SB9789	4	Cup Shoe Hold Down
18.	05983	2	Spring - Shoe Hold Down
19.	03880	1	Spring - Adjusting Screw Retainer
-	SB15845	1	Wheel Cylinder Repair Kit (includes spring, cup and boot)
-	SB15545	4	10" Brake Drum



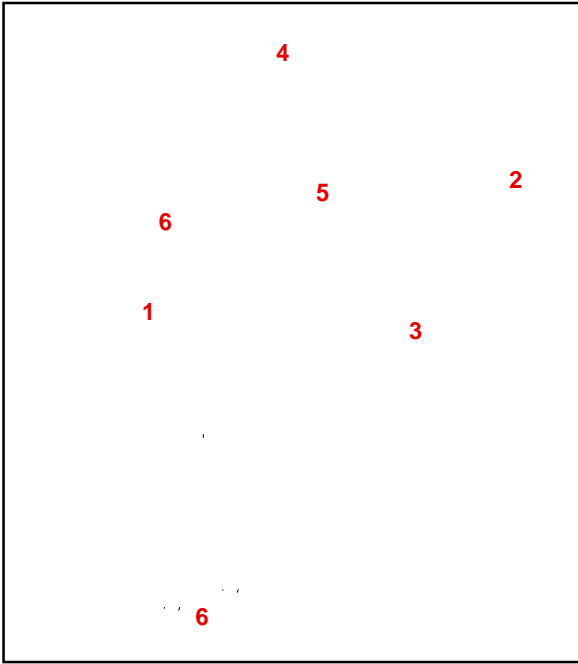
10" BRAKE DRUM



10" BRAKE CLUSTER

Please order replacement parts by PART NO. and DESCRIPTION.
Brake shoe kit can be ordered for one complete axle only.

OPTIONAL WINCH



PARTS LIST

REF. NO.	PART NO.	QTY. REQ'd.	DESCRIPTION
KK2W 1 Optional Winch			
1.	04620	1	Winch Mechanism (1400 capacity)
-	04621	-	Replacement Handle
2.	01738	1	Strap Assembly (includes strap & hook)
3.	02207	1	3/8"-18UNC x 3" Hex Hd. Bolt (gr.5)
4.	02769	2	3/8"-16UNC x 4" Hex Head Bolt (gr.5)
5.	00059	2	3/8" Flatwasher
6.	02592	3	3/8"-16UNC Nylon Insert Locknut

Please order replacement parts by **PART NO.** and **DESCRIPTION.**

* All options may not mount on tow dolly simultaneously.*

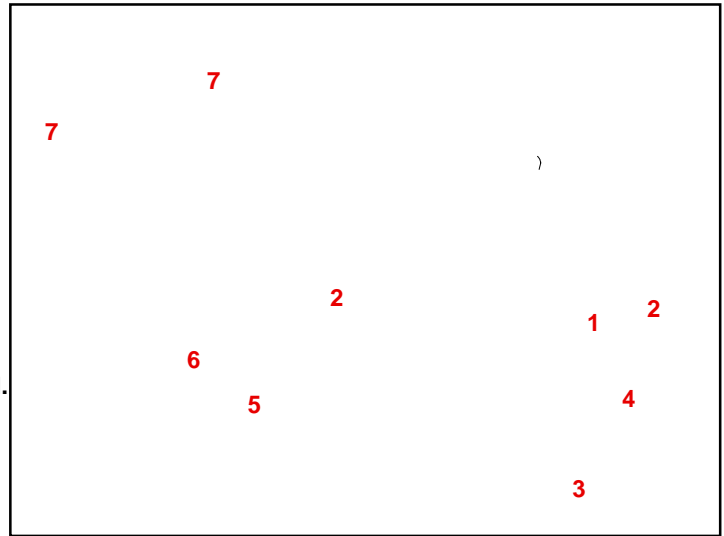
OPTIONAL TOOL BOX

PARTS LIST

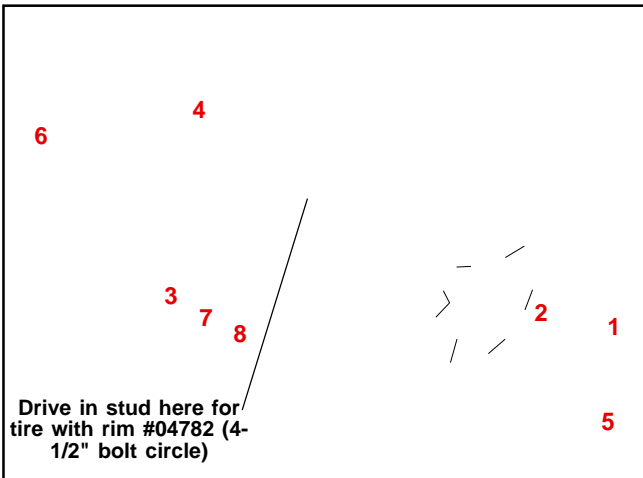
KK2TB	QTY.	Optional Tool Box
1.	00059	4 3/8" Flatwasher
2.	02592	8 3/8"-16UNC Nylon Insert Locknut
3.	01888-25	1 Tool Box
4.	00182	1 Small Hair Pin
5.	02717-25	2 Mounting "Z" Bracket
6.	00907	4 3/8"-16UNC x 1" Hex Head Bolt (gr.5)
7.	02759	2 3/8"-16UNC x 3" Square U-Bolt

Please order replacement parts by **PART NO.** and **DESCRIPTION.**

* All options may not mount on tow dolly simultaneously.*



OPTIONAL SPARE TIRE and MOUNT PARTS BREAKDOWN

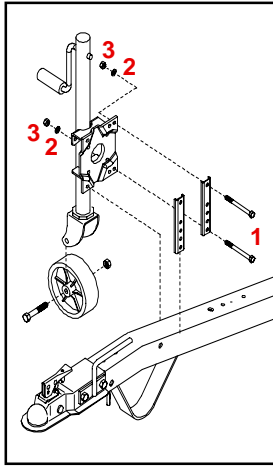


REF. NO.	PART NO.	QTY. REQ'd.	DESCRIPTION
-	KK10STB	1	Optional Spare Tire and Rim
1.	04826	1	ST205/75R 14"x"C" BSW Radial Tire
2.	04782	1	6" x 14" Rim 4-1/2" Bolt Circle
KK6STM 1 Spare Tire Mounting Bracket			
3.	02193-25	1	Spare Tire Bracket
4.	02917	1	Stud Bolt (12mm x 1.5)
5.	02933	2	Wheel Nut (12mm)
6.	02759	2	3/8"-16UNC Square U-Bolt
7.	00059	2	3/8" Flatwasher
8.	02592	4	3/8"-16UNC Nylon Insert Locknut
-	KK6TC		Optional Spare Tire Cover

Please order replacement parts by **PART NO.** & **DESCRIPTION.**

* All options may not mount on tow dolly simultaneously.*

OPTIONAL WHEEL JACK



WHEEL JACK PARTS LIST

- KK2WJ QTY. Optional Wheel Jack w/ hardware			
1.	02769	4	3/8" UNC x 4" Bolt, Gr. 5
2.	00060	4	3/8" Lock Washer
3.	00061	4	3/8" Hex Head Nut

Please order replacement parts by PART NO. and DESCRIPTION.

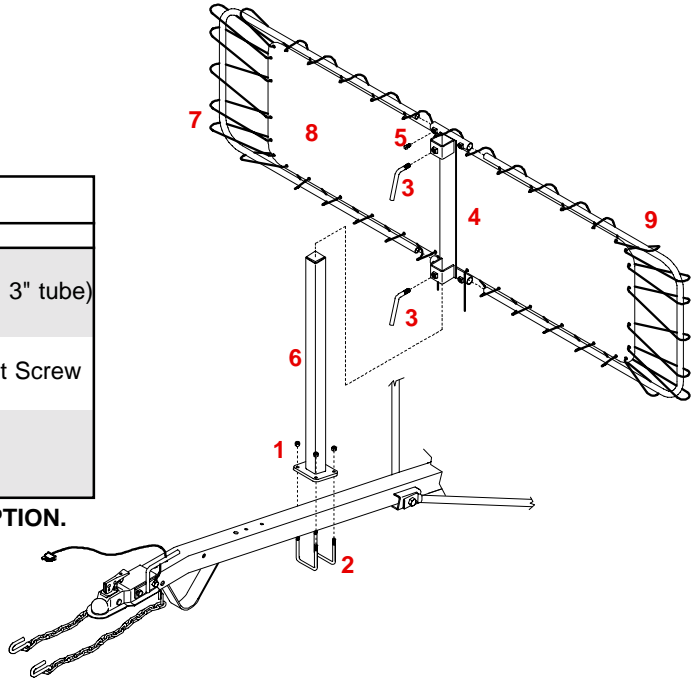
* All options may not mount on tow dolly simultaneously.*

OPTIONAL DEFLECTOR PARTS BREAKDOWN

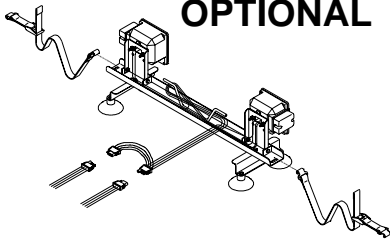
OPTIONAL DEFLECTOR PARTS LIST

REF. NO.	PART NO.	QTY. REQ'D.	DESCRIPTION
KK2DF Optional Deflector			
1.	02592	4	3/8"-16UNC Nylon Insert Lock Nut
2.	02759	2	3/8"-16UNC Square U-Bolt (fits around 3" tube)
3.	00161-95	2	Lock Handle
4.	02054-25	1	Deflector Slide Mount
5.	00095	4	3/8"-16UNC x 3/4" Ig. Square Head Set Screw
6.	02743-25	1	Deflector Upright Post
7.	02165	1	Deflector Lacing Cord (1/8" x 25 ft.)
8.	02161	1	Deflector Fabric
9.	02055-25	2	Deflector Framework

Please order replacement parts by PART NO. and DESCRIPTION.



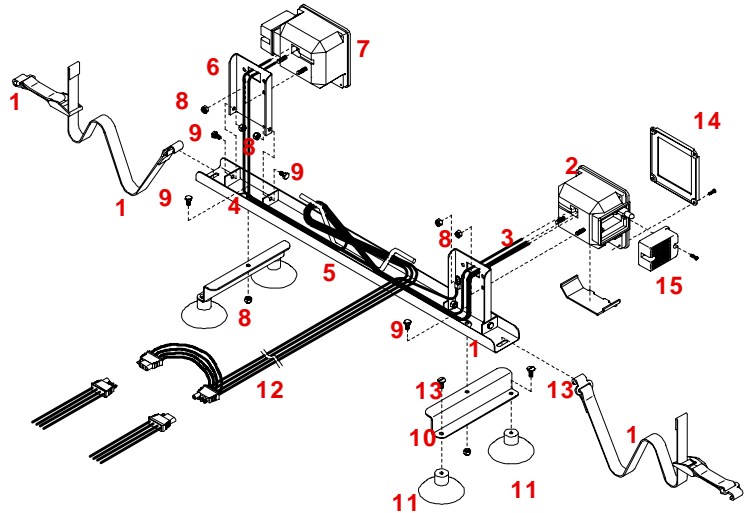
OPTIONAL LIGHT BAR (KKLB) PARTS BREAKDOWN



LIGHT BAR PARTS LIST

REF. NO.	PART NO.	QTY. REQ'D.	DESCRIPTION
KKLB Kar Kaddy Light Bar (complete)			
1.	01772	2	Nylon Security Strap with hooks & tightener
2.	01857	1	Left Tail/ Brake and Signal Light w/Lenses
3.	01773	1	Brown Jumper Wire
4.	01886	4	Wire Holder (metal)
5.	02385-25	1	Light Bar Framework
6.	02386-25	2	Adjustable Light Bracket
7.	01856	1	Right Tail/ Brake and Signal Light w/Lenses
8.	02772	10	1/4"-20UNC Nylon Insert Locknut
9.	00092	6	1/4"-20UNC x 1/2" Hex Head Bolt
10.	01777-25	2	Light Bar "Z" Bracket
11.	01778	4	3" Suction Cup w/Bolt (#13)
12.	02198	1	Light Bar Wiring Harness (new style)
13.	00068	4	1/4"-20UNC x 3/4" Hex Head Bolt
14.	01911	-	Large Red Lens
15.	01912	-	Small Red Lens

Please order replacement parts by PART NO. and DESCRIPTION.



COLOR CODE FOR WIRING HARNESS

WHITE	Ground
BROWN	Tail Lights, License Plate Lights, Light Cluster Bar & Clearance Lights
YELLOW	Left Turn and Stop
GREEN	Right Turn and Stop



DETHMERS MFG. COMPANY
P.O. BOX 189
4010 320th St., BOYDEN, IA. 51234
PH: (712) 725-2311 or (712) 725-2302
FAX: (712) 725-2380
TOLL FREE: 1-800-54DEMCO (1-800-543-3626)
www.demco-products.com